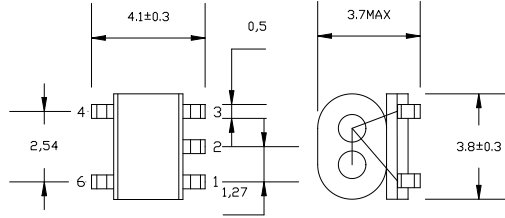


Dimensions



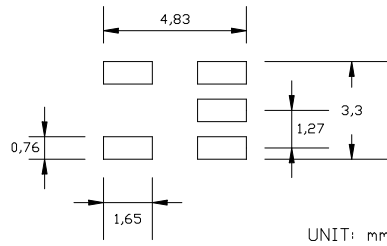
Maximum Ratings

Operating Temperature	-40°C-85°C
Storage Temperature	-55°C-100°C
RF Power	0.25W

Pin Connections

Primary Dot	4
Primary	6
Secondary	1
Secondary Dot	3

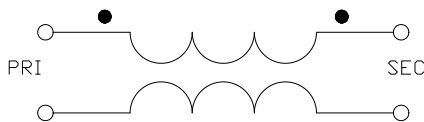
Recommended Patterns



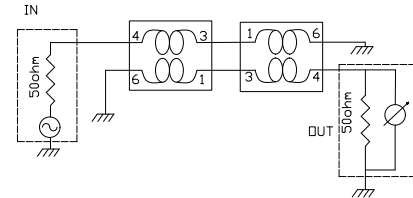
Electrical Specifications: $T_A = 25^\circ\text{C}$, 0dBm, $Z_0 = 50 \Omega$

Parameter	Test Conditions	Units	Min	Type	Max
Insertion Loss	700 - 1900 MHz	dB	-	0.5	1.2
Amplitude Unbalance (Nominal 0dB)	700 - 1900 MHz	dB	-	0.05	± 0.1
Phase Unbalance (Nominal 180°)	700 - 1900 MHz	deg	-	1	± 2
Input Return Loss	700 - 1900 MHz	dB	6	12	-

Schematic

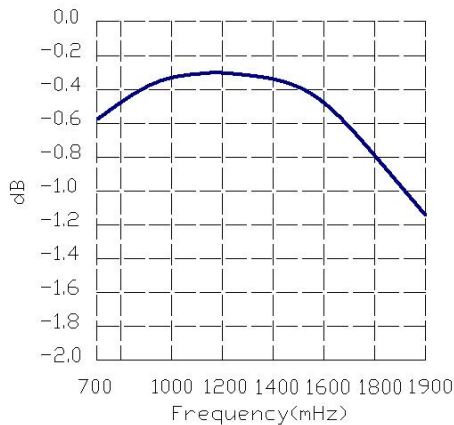


Test circuit

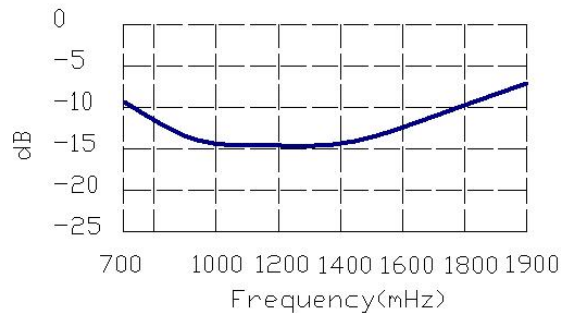


Typical Performance Curves: $T_A = 25^\circ\text{C}$, 0dBm, $Z_0 = 50\Omega$

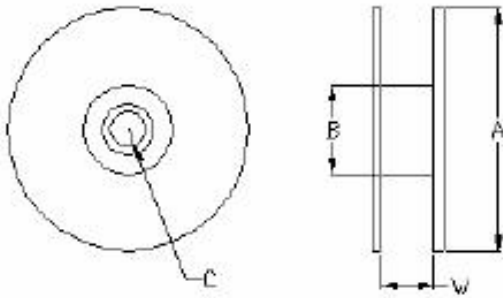
Insertion Loss



Return Loss



Package



Dimensions of reel (mm)				Packing Unit
A	B	C	W	Φ330mm
330	100	13.5	12.5	2000pcs/reel

